

JULY

# RSOSC NEWS

Phone: 780-437-0921  
Email: [rsosc@telus.net](mailto:rsosc@telus.net)

## SUMMER CHEQUE REMINDERS

Summer vacation is officially here. If your child is attending for July and August, please bring in your cheques ASAP.

Prices are \$326.35 per child per month for Full-Time Kindergarten and \$740.00 per child per month for Full-Time Grades 1-6. Summer Holding Fees are \$225.00 per child per month.

## NEW KINDERGARTEN FEES APRIL 2025

Effective April 1, 2025, the new cost of Full Time Kindergarten Child Care (100+ hours per month) requiring child care both during school and outside school hours at RSOSC will be changing to \$326.25/ child per month as implemented by the Province of Alberta.

Kindergarten parents will need to bring in supplemental cheques for \$108.75 for April 2025 – June 2025.

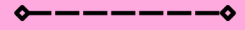
Also, the child care subsidy program will be ending effective March 31, 2025 for full time Kindergarten children. Please contact the child care subsidy department at [780-644-9992](tel:780-644-9992) if you are uncertain whether you're affected by the changes.

## SUMMER SUN REMINDERS

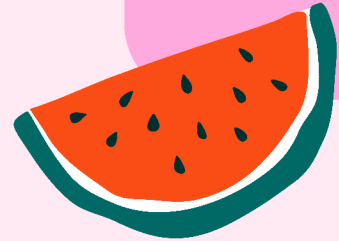
With summer comes warmer weather. If your child is spending summer with us, please remember to pack them the following: Sunscreen, Water Bottle, Hats, Bug Spray, and anything else your child needs.



## IMPORTANT DATES



**JULY 1 - Canada Day  
Center Closed**



## RSOSC PROF DEVELOPMENT

Board of Directors has decided that the centre will be closed on National Truth and Reconciliation Day (September 30, 2025) going forward and the day will be used for staff to participate in Professional Development opportunities.

## SUMMER OFF-SITE FIELD TRIPS

This summer we are planning multiple off-site trips for the children at each location. In order for everyone to have as much fun as possible, please double check your locations summer calendar.

Please ensure that your child is dropped off before the designated times on these days, as all staff will be off-site.

## CUT-OFF ARRIVAL TIMES FOR AM CHILD CARE:

### RSS Location:

Richard Secord – 8:15 a.m.

Westbrook – 8:00 a.m.

### ELC Location:

Richard Secord – 8:00 a.m.

Greenfield – 8:15 a.m.

If your child/ren are dropped off after the cut off time, we cannot guarantee we will be able to walk them to school.

## SUMMER PICNIC DONATIONS

Thank you to everyone who kindly donated food and other items for our staff picnic. Because of you, our staff was able to have a fun day at the lake with plenty of treats

## REMINDER ABOUT SPECIAL TREATS

Please refrain from bring in any treats into the center that are not pre-packaged with listed ingredients due to children on-site with life threatening allergies

## REMINDERS

If your child will be absent, please ensure you notify the centre in advance. We will expect all children to be attending each day unless notified otherwise.

When notifying the centre of your child being sick, please state what your child's symptoms are to the staff, as per Alberta Health Services standard we need to keep a record.

- o Children who are recovering from...
- o fever will be required to stay home for 24 hours.
- o vomiting and diarrhea will be required to stay home for 48 hours as per AHS requirements.

Please do not let anyone into the centre. It is the responsibility of the RSOSC staff to answer the door to ensure we are aware of all people entering the building. Please ensure to send your child with appropriate gear for the weather each day. Each child should arrive to the centre every day with clothing appropriate for playing outside everyday.

**\*\*As per the Parent Handbook, "a fee of \$2.00 a minute per child will be charged for each minute after 6:00 p.m. that a child remains at the Centre."**

## STAFF APPRECIATION FOR THE MONTH

Mei plans fun and engaging activities for kids that value their ideas and creativity. Mei has helped with training new staff and providing orientations for new Kindergarten families. She is a life long learner and attends a variety of conferences and workshops and also shares her knowledge with others.