

# December 2018

Phone: 780-437-0921  
Email: rsosc@telus.net



## Important Dates

Dec. 3 – Members meeting  
Dec. 20 – RSOSC Winter Concert  
Dec. 24 – Centre closes at 1 :00  
pm  
Dec 25 & 26 – Centre closed  
Dec. 31 – Centre closes at 1:00  
pm  
Jan 1 – Centre closed

**Cut-off arrival times for  
AM Child Care:**

### RSS Location:

Richard Secord – 8:15 a.m.  
Westbrook/St. Boniface – 8:00 a.m.

### ELC Location:

Richard Secord/Westbrook – 7:55 a.m.  
Greenfield/St. Stanislaus – 8:15 a.m.

## Winter Break

Please contact the centre if you will be dropping your child off any time after **9:00 am**.

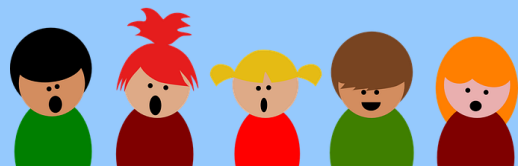
**If you haven't already filled out the Winter Break Survey, please do so by December 5<sup>th</sup>.**

It is important that we get an accurate idea of how many children to expect over this time period for staffing purposes. Staff schedules will be based on the results of the survey.

## RSOSC Winter Concert

The children at the centre are practicing for our upcoming concert! This will be taking place December 20<sup>th</sup> at the ELC Location.

Look out for more information on this event posted at the centres.



## Reminders:

- If your child will be absent, please ensure you **notify the centre** in advance. We will expect all children to be attending each day unless we hear otherwise.
- When notifying the centre of your child being sick, please state what your child's symptoms are to the staff, as per Alberta Health Services standard
- Parents are NOT permitted to enter the school through the centre's entrance. If you wish to speak with a teacher or pick your child up directly from school, please use to school's main entrance.
- \*During morning drop off, please ensure that you come into the centre to sign your child(ren) in on the clipboard. **This is to ensure the safety of your child(ren) as per our licensing requirement.**
- Please do not let anyone into the centre. It is the responsibility of the RSOSC staff to answer the door to ensure we are aware of all people entering the building.
- Please ensure your child has adequate winter clothing each day. Each child should arrive to the centre every day with a hat, gloves, boots, snow pants, and winter coat.

## Upcoming Members Meeting

Thank-you to everyone that takes the time to attend our meetings. We appreciate your dedication to the continued operation of the center.

Attending member meetings counts towards your volunteer credits!

**Date:** December 3, 2018

**Time:** 5:30pm

**Location:** ELC Location

Supper and childcare will be provided.



## **Staff Recognition Spotlight**

We would like to take this time to appreciate Jay in the Frog room for her willingness to help others, interactions with the children, and being a dedicated and loyal employee!



Follow our Facebook page!

[www.facebook.com/rsosc](http://www.facebook.com/rsosc)